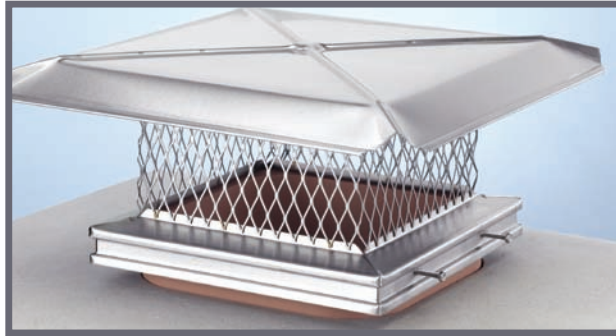


GELCO™ **LYEMANCE™** **LOCK-TOP®**



800-334-2154
www.GLLchimneyproducts.com

Overview

Gelco Manufacturing, based out of Aberdeen NC, produces stainless steel, copper and galvanized steel chimney caps and other products related to the chimney service industry. Our Distribution Center serves as a full service distribution point for distributors in the chimney service industry.

This facility began operations in 1979 introducing the first stainless steel chimney cap to the chimney service industry, setting the standard for innovation, quality, durability and customer service.

Gelco Manufacturing Chimney Cap Product offering consists of:

Single-flue caps:

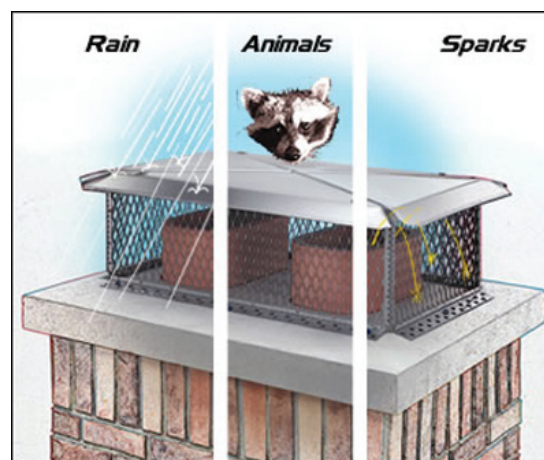
- Sold individually
- Multi packs of 3 or 6
- California mesh & corners for oval flues

Multi-flue caps:

- Fully assembled
- Chimney protectors (with Swing Tabs)
- Semi-custom
- Knock downs

Specialty caps:

- EasyClean
- Flue Stretcher
- Custom order



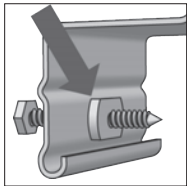
<i>Material</i>	<i>Benefits</i>
304 Alloy Stainless Steel	<ul style="list-style-type: none"> • Rust proof • Best value • Always recommended
Galvanized Steel	<ul style="list-style-type: none"> • Least expensive • Easy to paint
Copper	<ul style="list-style-type: none"> • Rust proof • Decorative

<i>Mesh Size</i>	<i>When to Use</i>
3/4"	<ul style="list-style-type: none"> • Most commonly used
5/8"	<ul style="list-style-type: none"> • Used in CA & other states requiring stricter spark arrestors (AZ, NV, parts of OK)

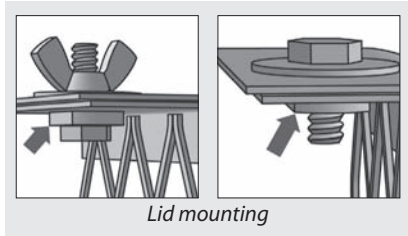
Single-Flue Multi-Packs

- 100% 304 stainless steel
- 8" screen height, 3/4" mesh
- Lifetime Warranty
- Available in 6-packs or 3-packs

Lid attaches to the base/screen with either cap screws or optional wing nuts. Weld nuts are installed in the base for solid mounting to the flue.



Weld nuts in the base provide solid mounting



Each pack includes cap screws. Wing nuts are an option.

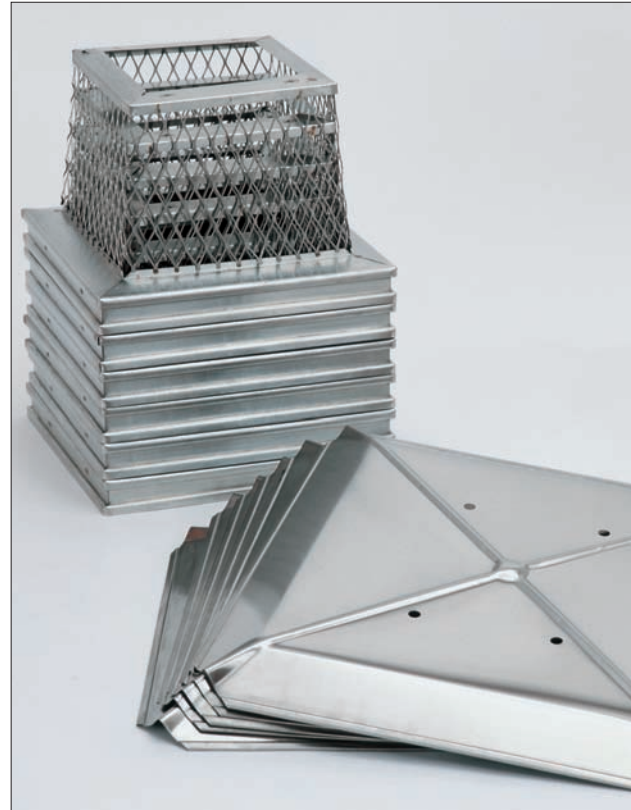


Table Guide

• SS = Stainless Steel

Item #	Base Short Side	Base Width	Screen Height	Fits Outside Tile Dimensions	Material	Pack
13751	8"	8"	8"	6 1/4" X 6 1/4" to 8 1/2" X 8 1/2"	SS	6
37436		8"	8"	6 1/4" X 6 1/4" to 8 1/2" X 8 1/2"	SS	3
13753		13"	8"	6 1/4" X 11 1/2" to 8 1/2" X 13 1/2"	SS	6
37438		13"	8"	6 1/4" X 11 1/2" to 8 1/2" X 13 1/2"	SS	3
13735		17"	8"	6 1/2" X 16 1/2" to 8 1/2" X 18 1/2"	SS	3
13756	12"	12"	8"	10 1/2" X 10 1/2" to 12 1/2" X 12 1/2"	SS	6
37440		12"	8"	10 1/2" X 10 1/2" to 12 1/2" X 12 1/2"	SS	3
13757	13"	13"	8"	11 1/2" X 11 1/2" to 13 1/2" X 13 1/2"	SS	6
13736		13"	8"	11 1/2" X 11 1/2" to 13 1/2" X 13 1/2"	SS	3
13738		17"	8"	11 1/2" X 16 1/2" to 13 1/2" X 18 1/2"	SS	3

- Bolt-On-Legs
 - Flue Grippers
 - Cap Mounting Brackets
- See page 7

Hardware

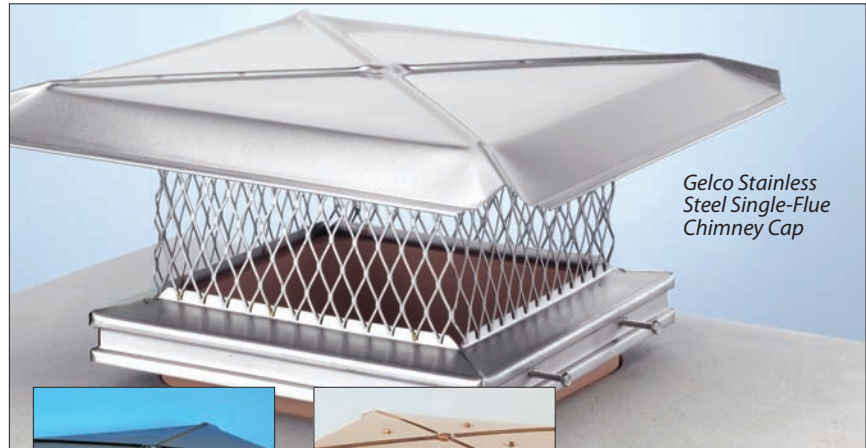
Item #	Description
13905	Extra Complete Hardware Pack (includes 24 each cone-point screws, hex-head screws, washers)
37432	30 Stainless Steel Wing Nuts

Single-Flue

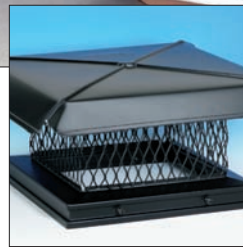
continued on next page

- 304 stainless steel, galvanized, or copper
- Lifetime Warranty for stainless steel & copper
- Lifetime Warranty on workmanship & materials, & three year warranty on rust through for galvanized
- 18-ga. base & mesh, 24-ga. lid

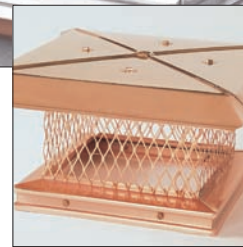
Single-flue caps are available in rugged 3/4" mesh. Some sizes are available in 5/8" (California) mesh. Gelco's signature cross-braced lid and deep double channel base give it superior strength so you know your customer is getting the best chimney cap on the market.



Gelco Stainless Steel Single-Flue Chimney Cap



Gelco Galvanized Single-Flue Chimney Cap



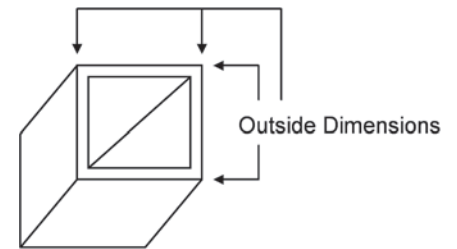
Gelco Copper Single-Flue Chimney Cap

Please note: Copper caps are not recommended for installation on white or light-colored chimneys, as they may cause yellow streaks.

Table Guide

- **SS = Stainless Steel**
- **GALV = Galvanized Painted Black**
- **CU = Copper**
- **5/8" Mesh Screens Are Listed In Red**

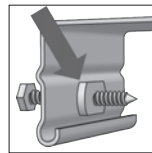
Item #	Base Short Side	Base Width	Screen Height	Fits Outside Tile Dimensions	Material	Mesh
13101	8"	8"	8"	6 1/4"X6 1/4" to 8 1/2"X8 1/2"	SS	3/4"
13301		8"	8"	6 1/4"X6 1/4" to 8 1/2"X8 1/2"	SS	5/8"
13401		8"	8"	6 1/4"X6 1/4" to 8 1/2"X8 1/2"	GALV	3/4"
13601		8"	8"	6 1/4"X6 1/4" to 8 1/2"X8 1/2"	CU	3/4"
13103	13"	13"	8"	6 1/4"X11 1/2" to 8 1/2"X14"	SS	3/4"
13303		13"	8"	6 1/4"X11 1/2" to 8 1/2"X13 1/2"	SS	5/8"
13403		13"	8"	6 1/4"X11 1/2" to 8 1/2"X13 1/2"	GALV	3/4"
13603		13"	8"	6 1/4"X11 1/2" to 8 1/2"X13 1/2"	CU	3/4"
13105	17"	17"	8"	6 1/4"X16 1/2" to 8 1/2"X19"	SS	3/4"
13305		17"	8"	6 1/4"X16 1/2" to 8 1/2"X18 1/2"	SS	5/8"
13405		17"	8"	6 1/4"X16 1/2" to 8 1/2"X18 1/2"	GALV	3/4"
13605		17"	8"	6 1/4"X16 1/2" to 8 1/2"X18 1/2"	CU	3/4"
13306	19"	8"	6 1/4"X18" to 8 1/2"X20"	SS	5/8"	



Single-Flue (continued)

Table Guide

- **SS = Stainless Steel**
- **GALV = Galvanized Painted Black**
- **CU = Copper**
- **5/8" Mesh Screens Are Listed In Red**



Weld nuts in the base provide solid mounting

Item #	Base Short Side	Base Width	Screen Height	Fits Outside Tile Dimensions	Material	Mesh
13115	9"	22"	8"	6¼"X19" to 8½"X21½"	SS	3/4"
13116		28"	8"	6¼"X25" to 8½"X27¼"	SS	3/4"
13315	10"	17"	8"	8"X16½" to 10½"X18½"	SS	5/8"
13757	12"	12"	8"	10"X10½" to 12½"X13"	SS	3/4"
13738		16"	8"	10½"X14½" to 13"X17"	SS	3/4"
13107	13"	13"	8"	11"X11½" to 13½"X14"	SS	3/4"
13307		13"	8"	11"X11" to 13½"X13½"	SS	5/8"
13407		13"	8"	11½"X11½" to 13½"X13½"	GALV	3/4"
13607		13"	8"	11½"X11½" to 13½"X13 1/2"	CU	3/4"
13109		17"	8"	11"X16½" to 13½"X19"	SS	3/4"
13309		17"	8"	11"X16½" to 13½"X18½"	SS	5/8"
13409		17"	8"	11"X16½" to 13½"X18½"	GALV	3/4"
13609		17"	8"	11"X16½" to 13½"X18½"	CU	3/4"
13317		21"	8"	11"X19" to 13½"X21½"	SS	5/8"
13112		15"	15"	8"	14"X14½" to 16½"X17"	SS
13111	17"	17"	8"	16"X16½" to 18½"X19"	SS	3/4"
13411		17"	8"	16½"X16½" to 18½"X18½"	GALV	3/4"
13611		17"	8"	16½"X16½" to 18½"X18½"	CU	3/4"
13319		21"	8"	15"X19" to 17½"X21½"	SS	5/8"

- **Bolt-On-Legs**
 - **Flue Grippers**
 - **Cap Mounting Brackets**
- See page 7

Sales Aids

Item #	Description	
99307	Gelco Chimney Top Flyers (pack of 100)	SS & copper only
99313		SS, copper, & black galvanized
99311		Custom cap flyers
99255	Gelco Chimney Top Door Hangers (pack of 100)	



- **Downloadable**

EasyClean™

- 100% stainless steel
- Lifetime Warranty
- Hinged cage flips out of the way for cleaning the flue

Easy-access cap makes it easy for anybody to clean the flue. No hassle with hand tools, no figuring out where to put the cap while cleaning - just swing open, brush the flue, and swing shut.



Item #	Base Short Side	Base Width	Fits Outside Tile Dimensions
13051	8"	8"	6"X6" to 8½"X8½"
13053		13"	6"X11½" to 8½"X14"
13055	12"	12"	10"X10½" to 12½"X13"
13056	13"	13"	11"X11½" to 13½"X14"



1. Cage unlatches by squeezing two thumb latches...



2. Cap swings open...



3. Flue can be cleaned

Flue Stretcher

- 3/4" mesh
- Lifetime Warranty
- Easily tightens with screws to the flue tile on all four sides of the base
- Holds tight under several hundred pounds of force
- Raises smoke and gases above adjacent adjacent downstairs flue
- Extends flue to increase draft

By increasing the effective height of the flue, the Flue Stretcher solves two problems:

1) Negative House Pressures

Adding the Flue Stretcher to the upstairs flue distances its smoke from the downward pull of the downstairs flue.

2) **Increase Draft** by increasing height and putting the flue opening above roofs and other nearby structures.



Copper Flue Stretcher, 1'X 8"X8"



Stainless Steel Flue Stretcher, 2'X 8"X13", on one side of a double flue chimney

Table Guide

- **SS = Stainless Steel**
- **CU = Copper**

Item #	Base Short Side	Base Width	Total Cap Height	Adds to Flue Height	Fits Outside Tile Dimensions	Material
13124	8"	8"	22"	1'	6 1/2"X6 1/2" to 8 3/4"X8 3/4"	SS
14498		8"	22"	1'	6 1/2"X6 1/2" to 8 3/4"X8 3/4"	CU
13126		8"	34"	2'	6 1/2"X6 1/2" to 8 3/4"X8 3/4"	SS
14499		8"	34"	2'	6 1/2"X6 1/2" to 8 3/4"X8 3/4"	CU
13128		13"	22"	1'	6 1/2"X11 1/2" to 8 3/4"X14"	SS
14504		13"	22"	1'	6 1/2"X11 1/2" to 8 3/4"X14"	CU
13130		13"	34"	2'	6 1/2"X11 1/2" to 8 3/4"X14"	SS
14500		13"	34"	2'	6 1/2"X11 1/2" to 8 3/4"X14"	CU

13132	13"	13"	22"	1'	11 1/2"X11 1/2" to 13 3/4"X14"	SS
14501		13"	22"	1'	11 1/2"X11 1/2" to 13 3/4"X14"	CU
13134		13"	34"	2'	11 1/2"X11 1/2" to 13 3/4"X14"	SS
14502		13"	34"	2'	11 1/2"X11 1/2" to 13 3/4"X14"	CU
14496		17"	22"	1'	11 1/2"X16 1/2" to 13 3/4"X19"	SS
14503		17"	22"	1'	11 1/2"X16 1/2" to 13 3/4"X19"	CU
14497		17"	34"	2'	11 1/2"X16 1/2" to 13 3/4"X19"	SS
14505		17"	34"	2'	11 1/2"X16 1/2" to 13 3/4"X19"	CU

Accessories

Galvanized Bolt-On Legs

Item #	Description
10900	set of 4

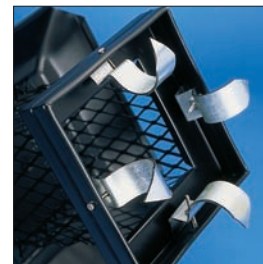
Fits all Gelco single-flue caps. The 12-ga. galvanized legs extend down and out and hold the cap in place on top of the chimney. Installation may not be totally secure in extremely high winds.



Flue Grippers

Item #	Description
13908	stainless, set of 4
13909	galvanized, set of 4

These 12 ga. Flue Grippers can be used with all Gelco single-flue chimney caps. Installation may not be totally secure in extremely high winds.



Cap Mounting Brackets

Item #	Description
13907	stainless, set of 12

Fits all Gelco single-flue caps. These stainless steel, 18-ga. brackets bolt to the base of the chimney cap using the cap mounting screws. They are pre-punched for tapcon masonry fasteners. Simply attaches to each mounting screw and fastens to the chimney crown with tapcons.



Animal Guards, Stainless Steel

Item #	Description	Fits Outside Tile Dimensions
13200	8"X8"	6"X6" to 8 1/2"X8 1/2"
13204	8"X13"	6"X11 1/2" to 8 1/2"X14"
13206	13"X13"	11"X11 1/2" to 13 1/2"X14"

- 18-ga.
- 5 1/2" screen height
- Custom sizes available



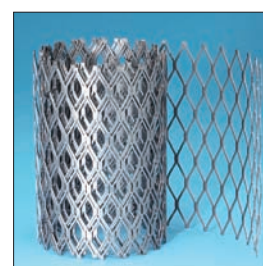
Roof Vent Guard, Stainless Steel

Item #	Description
14932	16"X16"X5", 3-pack



Stainless Steel Mesh, 18-Ga.

Item #	Description	
13200	3/4" mesh	8" wide X96" long
13204		12" wide X96" long
13206		16" wide X96" long
13990	5/8" mesh	8" wide X96" long
13992		12" wide X96" long
13994		16" wide X96" long



continued on next page

Multi-Flue Caps

- Available in Stainless Steel, Galvanized or Copper
- Lifetime Warranty for stainless steel and copper
- Lifetime Warranty on workmanship and materials, and three year warranty on rust through for galvanized
- 24-ga. lid and 18-ga. mesh
- Choose from Fully Assembled, the Popular Chimney Protector, or Knock Down
- 3/4" and 5/8" mesh screens

Gelco has long been recognized as the premier multi-flue cap in the chimney industry. We offer **three styles**.

Choose one of Gelco's **Fully Assembled** multi-flue caps available in 3/4" mesh or 5/8" in some sizes. Premium Gelco quality in a cap ready to mount right out of the box. Available in 304-alloy stainless steel, an economically priced galvanized painted black, or copper.

By far our most popular option is our 304-Alloy stainless steel **Gelco Chimney Protector** with 3/4" mesh. It is an easily assembled knock down cap with the added advantage of Gelco's SwingTabs™ that make mounting to any crown a cinch.

Knock-Down caps have the same ease of assembly and are manufactured with the same materials as the Chimney Protector, but do not have the swing tabs. Available in 304-alloy stainless steel, or the economically priced galvanized painted black.

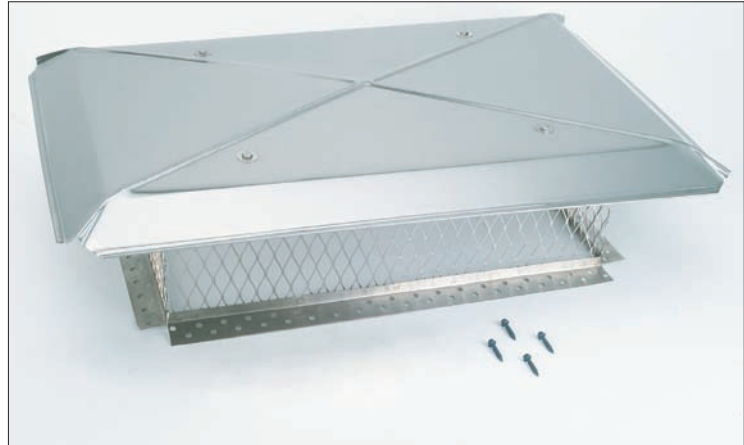
Caps ship same day on orders received by 3 p.m. EST.



Stainless Chimney Protector Multi-Flue Chimney Cap



Stainless Chimney Protector Multi-Flue Chimney Cap's Swing-Tab™ allow for an inside/outside mount & an easy installation to uneven crowns.



Stainless Fully Assembled Multi-Flue Chimney Cap



Galvanized Knock-Down Multi-Flue Chimney Cap



Copper Fully Assembled Multi-Flue Chimney Cap



Stainless Chimney Protector Multi-Flue Chimney Cap Un-Assembled

Multi-Flue Caps - continued

continued on next page



14" & larger lids embossed in eight directions for more strength & stability.

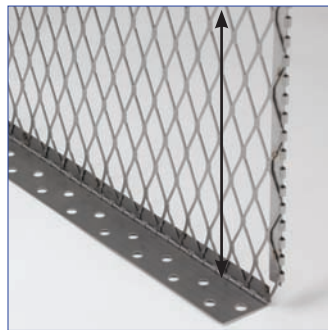
Gelco Stainless Semi-Custom Chimney Protector Multi-Flue Chimney Cap Assembled



Gelco Stainless Semi-Custom Chimney Protector Multi-Flue Chimney Cap has a 3 panel design for easier assembly on a roof



Gelco Stainless Semi-Custom Chimney Protector Multi-Flue Chimney Cap hinges & screens run the full height for more stability & coverage



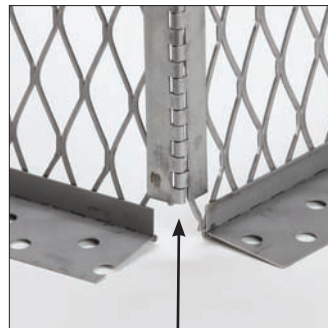
Gelco Stainless Semi-Custom Chimney Protector Multi-Flue Chimney Cap's screen barbs are cut off for your protection



Gelco Stainless Semi-Custom Chimney Protector Multi-Flue Chimney Cap has hinged corners & pin for easy assembly



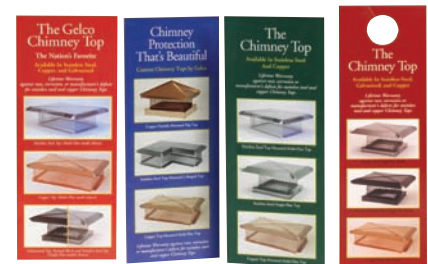
Gelco Stainless Semi-Custom Chimney Protector Multi-Flue Chimney Cap is designed with a reinforced & hemmed lid



Gelco Stainless Semi-Custom Chimney Protector Multi-Flue Chimney Cap's SwingTabs™ allow for an inside/outside mount & an easy installation to uneven crowns.

Sales Aids

Item #	Description	
99307	Gelco Chimney Top Flyers (pack of 100)	SS & copper only
99313		SS, copper, & black galvanized
99311		Custom cap flyers
99255	Gelco Chimney Top Door Hangers (pack of 100)	



• Downloadable

Multi-Flue Caps - continued

continued on next page

TABLE GUIDE

- **SS = Stainless Steel**
- **GALV = Galvanized Painted Black**
- **CU = Copper**
- **FA = Fully Assembled**
- **KD = Knock Down**
- **CP = Chimney Protector**

Item #	Short Side	Base Width	Screen Height	Lid	Style	Material	Mesh	
13272	9"	9"	12"	14½"X14½"	KD	SS	3/4"	
13215		13"	8"	22¼"X22¼"	FA	SS	3/4"	
11705		13"	10"	22¼"X22¼"	CP	SS	3/4"	
13282		13"	12"	14½"X19½"	CP	SS	3/4"	
13237	13"	20"	8"	22¼"X34½"	FA	SS	3/4"	
11710		20"	10"	22¼"X34½"	CP	SS	3/4"	
13238		24"	8"	22¼"X34½"	FA	SS	3/4"	
11714		24"	10"	22¼"X34½"	CP	SS	3/4"	
13249		26"	8"	22¼"X34½"	FA	SS	3/4"	
11716		26"	10"	22¼"X34½"	CP	SS	3/4"	
13239		28"	8"	22¼"X34½"	FA	SS	3/4"	
11718		28"	10"	22¼"X34½"	CP	SS	3/4"	
13247		36"	8"	22¼"X46½"	FA	SS	3/4"	
11726		36"	10"	22¼"X46½"	CP	SS	3/4"	
13210		14"	14"	8"	22¼"X22¼"	FA	SS	3/4"
13510			14"	8"	22¼"X22¼"	FA	GALV	3/4"
13620			14"	8"	22¼"X22¼"	FA	CU	3/4"
11730			14"	10"	22¼"X22¼"	CP	SS	3/4"
13212			14"	12"	22¼"X22¼"	CP	SS	3/4"

Note: There should be a minimum of 5" between the bottom of the cap lid and the top of the flue tile.

Hardware

Item #	Description
13905	Extra Complete Hardware Pack (includes 24 each cone-point screws, hex-head screws, washers)
37432	30 Stainless Steel Wing Nuts
37434	30 Black Wing Nuts

Multi-Flue Caps - continued

TABLE GUIDE

- **SS** = Stainless Steel
- **GALV** = Galvanized Painted Black
- **CU** = Copper
- **FA** = Fully Assembled
- **KD** = Knock Down
- **CP** = Chimney Protector

• **5/8" Mesh Screens Are Listed In Red**

Item #	Short Side	Width	Screen Height	Lid	Style	Material	Mesh
13220	17"	17"	8"	22¼"X22¼"	FA	SS	3/4"
13520		17"	8"	22¼"X22¼"	FA	GALV	3/4"
13625		17"	8"	22¼"X22¼"	FA	CU	3/4"
11740		17"	10"	22¼"X22¼"	CP	SS	3/4"
13222		17"	12"	22¼"X22¼"	CP	SS	3/4"
11742		22"	10"	22¼"X34½"	CP	SS	3/4"
13230		29"	8"	22¼"X34½"	FA	SS	3/4"
13530		29"	8"	22¼"X34½"	FA	GALV	3/4"
13630		29"	8"	22¼"X34½"	FA	CU	3/4"
13233		29"	8"	22¼"X34½"	CP	SS	3/4"
13532		29"	8"	22¼"X34½"	KD	GALV	3/4"
11746		29"	10"	22¼"X34½"	CP	SS	3/4"
13231		29"	12"	22¼"X34½"	CP	SS	3/4"
13235		29"	16"	22¼"X34½"	CP	SS	3/4"
11750		35"	10"	22¼"X46½"	CP	SS	3/4"
13240		41"	8"	22¼"X46½"	FA	SS	3/4"
13340		41"	8"	22½"X46½"	FA	SS	5/8"
13540		41"	8"	22¼"X46½"	FA	GALV	3/4"
13570		41"	8"	22½"X46½"	FA	GALV	5/8"
13640		41"	8"	22¼"X46½"	FA	CU	3/4"
13243		41"	8"	22¼"X46½"	CP	SS	3/4"
13542		41"	8"	22¼"X46½"	KD	GALV	3/4"
11754		41"	10"	22¼"X46½"	CP	SS	3/4"
13248		41"	12"	22¼"X46½"	CP	SS	3/4"
13245		41"	16"	22¼"X46½"	CP	SS	3/4"
13246	49"	8"	22¼"X54½"	FA	SS	3/4"	
37442	49"	10"	22¼"X54½"	CP	SS	3/4"	
11760	49"	12"	22¼"X54½"	CP	SS	3/4"	
13250	58"	8"	22¼"X63½"	FA	SS	3/4"	
11758	58"	10"	22¼"X63½"	CP	SS	3/4"	
13254	58"	12"	22¼"X63½"	CP	SS	3/4"	

Note: There should be a minimum of 5" between the bottom of the cap lid and the top of the flue tile.

Custom Order Caps

- Choose from 3 metals, 5 lid styles, & 3 mounting styles
- Custom shapes also available
- Lifetime Warranty on SS & copper
- Lifetime Warranty on workmanship & materials for galvanized, with a 3-year warranty against rust-through

What is a custom cap?

A Gelco custom cap is custom fabricated to your exact dimensions. It's a cap that doesn't fit the "standard" mold.

Why use a custom cap?

There are basically three reasons to choose a custom cap:

- 1) **Size requirements.** When you come across an oversized chimney, an odd-sized flue, or a chimney with multiple flues that just will not accommodate a standard cap.
- 2) **Appearance.** If you're looking for unique design options that will allow you to match the existing decor of the house and roof.
- 3) **Protection.** A growing number of chimney professionals are offering their customers the "Multi-Flue Advantage." Whether they are covering one flue or several flues at once, they make a multi-flue cap their first recommendation to the homeowner. It protects the chimney flue and crown and is a better investment. Use when a standard-sized multi-flue cap won't cover it all.

Types of custom caps available

Shapes. You can request your cap in any of these shapes: square, rectangular, round, L-shaped, T-shaped, or cross-shaped.

Materials. Caps can be made of copper, stainless steel, or galvanized steel painted black. They can have 3/4" or 5/8" screens, ranging in height from 5" to 24".

Please note: copper caps are not recommended for installation on light-colored chimneys, as they may cause yellow streaks.

Lid Styles. Look over the custom caps we have pictured for you here and on the facing page.

You'll find a picture of a cap on the facing page, in the top right. This lid has four sides slanting upward meeting at a ridge along the center of the top. Hence the name "Hip and Ridge." The top left inset photo on the facing page shows the lid slanting inward on all four sides and meeting at a point in the center of the top, called "Hip."

Now check out the photo to the right of a stainless cap with a gable lid. It has standard "open" ends. You can also get it with "closed" ends, where the triangular area is sheet metal.

The two remaining lid styles are "flat" and "cone." The cone lid on the facing page is designed for round caps only. Hip, Hip and Ridge, and Gable lids can be used on rectangular or square bases only. Flat lids can be used on any base.



Top-Mounted, Cross-Shaped, Flat Lid



Stainless Cap with Gable Lid

Custom Order Caps - *continued*

continued on next page

Mounting options

Choose from three:

1) **The top mounted style** attaches to the top of the crown. Stainless models feature Gelco's SwingTab™ Reversible Mounting Strips. The unique design of the SwingTab allows you to simply swing the mounting strips in or out as needed for the best fit. The lid is easily removed for cleaning. All top mounted caps are shipped with the masonry fasteners needed for installation.

2) **The outside mounted style** completely covers and protects the entire top of the chimney. It has a 3" skirt which fits closely around the chimney crown and is attached with masonry fasteners to the outside of the chimney. (Hardware is included.) The lid of the cap unbolts for access to the flue tile.

3) **A modified single-flue style** is for a flue tile that doesn't work with any of our stock single-flue caps. This cap bolts to the flue tile using cone-pointed set-screws like a standard single-flue cap.

Compute custom order cap prices on-the-spot

Once you have determined the size and style, call us at **800-334-2154**. We'll enter all your information into our computer and give you the price. The quote you receive will estimate all packaging and shipping costs.

Custom caps are nonreturnable

Each custom cap is constructed to your exact specifications; therefore, they are nonreturnable.



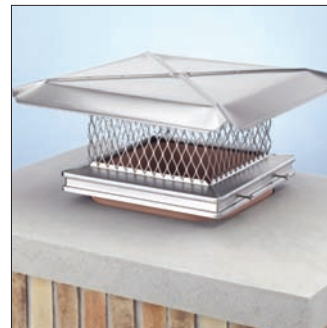
Top Mounted, Hip & Ridge Lid



Outside-Mounted, Hip Lid



Round Single-Flue, Cone Lid



Modified Single-Flue, Flat Lid



Round Single-Flue, Flat Lid

Sales Aids

Item #	Description
99311	Gelco Chimney Top Flyers, Custom Cap (pack of 100)
99253	Gelco Special Order Cap Worksheet (pack of 25)



• Downloadable

• Downloadable

The **Gelco Special Order Cap Worksheet** shows diagrams of outside mounted, top mounted, round single-flue, and modified single-flue caps for every dimension needed.

Custom Order Caps - *continued*

continued on next page

How to measure your custom cap

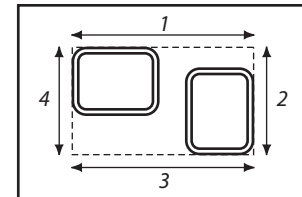
Top Mounted: Use one of two methods to measure for a top mounted custom cap.

1) **"Outside Chimney Dimensions" Method:** This is the preferred method because it results in a cap that covers and protects the entire crown. And this is the only method which can be used to measure for L, T, or cross-shaped caps. Measure all sides of the chimney crown to the nearest 1/8". For a rectangular cap, measure length and width, and subtract 4" from each measurement for tabs. For cross-shaped, T-shaped, and L-shaped caps measure exact dimensions of each side. Subtract 4" for the tabs. Don't assume that one side equals the other because it looks the same. Take your measurements per the diagrams on the facing page. Make sure there is at least 2" of clearance from the outside of the chimney to the nearest flue tile.



Galvanized Top-Mounted, Extra Long

2) **"Screen-to-Screen Dimensions" Method:** This method can only be used to size square or rectangular caps. It can be used to create a smaller, less expensive cap than the outside chimney dimensions method. Measure the outside of the flue tile area to be covered (see diagram here) then add 2" or more to create the final screen-to-screen dimensions you desire.

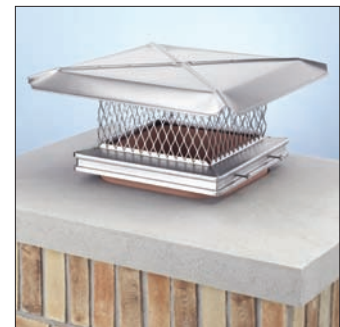


Add up outside dimensions of the flue tile area for Top Mounted "Screen-to-Screen Dimensions" Method

Outside Mounted: Since the outside mounted cap fits closely around the outside brick of the chimney, exact measurements to 1/8" are needed for all sides. Don't assume that one side is equal to another because it looks the same. An exact measurement is a must. The factory will add a fraction of an inch to each of the sides to allow for proper clearance. The skirt doesn't have pre-drilled mounting holes because each chimney will have mortar joints in different places.

Modified Single-Flue: We will need to know the exact outside dimensions of the flue tile. We will then add 1 1/2" to this dimension so the base size is a perfect fit for that flue tile. Please do not adjust or estimate the flue tile size. The cap may not fit correctly if you do. Modified single-flue caps can also be used to cover multiple flues, as long as the flues are in line and of uniform height and width.

Round Single-Flue: The round single-flue custom cap is similar to our HomeSaver Pro model. The tabs on the inside of the base allow the cap to be installed like a regular single-flue cap. The tabs sit on the flue tile and the cap is then secured with screws. You have the option of ordering a square flat lid, or a cone-pointed lid. To order a round single-flue, just give us the outside diameter of the flue tile. We'll add 1" to get the base size. Easy!



Modified Single-Flue, Flat Lid



Round Single-Flue, Flat Lid

Custom Order Caps - *continued*

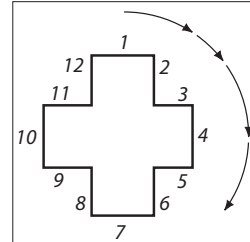
How to measure your custom cap

Odd-Shaped Chimneys: For L-shaped, T-shaped, or cross-shaped caps, begin compiling your chimney measurements starting at the "top" of the figure and moving in a clockwise direction. See the diagrams below for details.

continued on next page



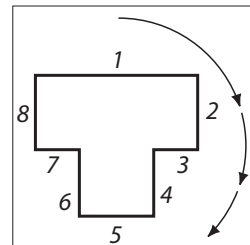
Top-Mounted, Cross-Shaped, Flat Lid



For a cross-shaped top, give the dimensions in clockwise order, starting with any end.



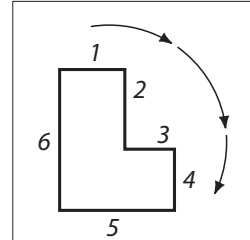
Top-Mounted, T-Shaped, Flat Lid



For a T-shaped top, give the dimensions in clockwise order, beginning with the top of the "T".



Top-Mounted, L-Shaped, Flat Lid



For an L-shaped top, give the dimensions in clockwise order, starting at the top of the "L".

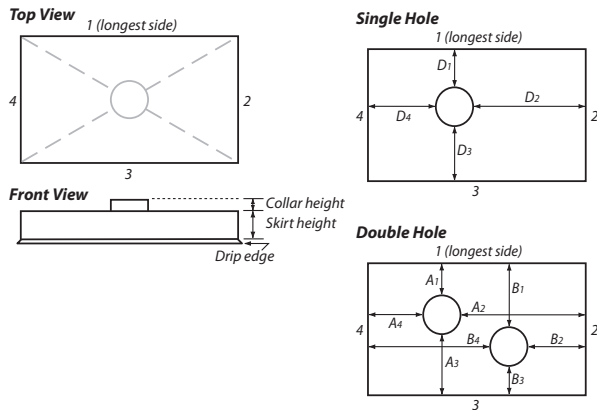
Custom Order Chase Covers

- Choose 24-ga. SS, copper, galvanized steel painted black, or .040 thick aluminum
- Available with or without hole
- Lifetime Warranty on SS & copper covers
- 7-Year Warranty on aluminum & 3-Year Warranty on galvanized-painted-black covers against rust-through

How to measure for your custom order chase cover

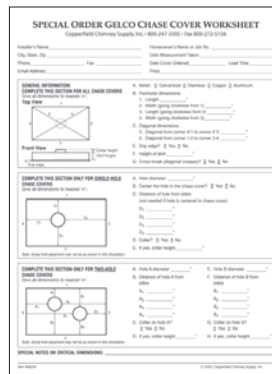
The best way to have all the measurements that we need for your custom chase cover is to use a free Gelco Chase Cover Worksheet. A Gelco Chase Cover fits over the outside of the brick, wooden, or metal chase of the chimney, so your measurements must be accurate to within 1/8". Mortar joints are not always the same width, so one side of a chimney could be longer than another, **please do not estimate your measurements**. Exact diagonal measurements from corner to corner are needed as well to ensure a proper fit if the measurements are not completely square.

If holes are required in the chase cover, provide exact diameters of the holes to ensure a snug fit for the outside diameter of the pipe passing through. If you have opted to have a collar added to your hole, a fraction of an inch will be added to ensure the hole fits the pipe perfectly. And, unless you want a single hole placed "dead center" in the middle of the Gelco Chase Cover, also provide exact dimensions to each hole from all four sides. This allows the holes to be precisely placed. If there are multiple holes in a chase cover, we require that you provide a drawing showing the placement — just to be sure we get it right. The collar for each hole can be ordered up to 6" in height (the standard collar height is 2") and is critical for keeping out water. The skirt is available up to 9", with the standard skirt being 3".



Sales Aids

Item #	Description
99254	Gelco Special Order Chase Cover Worksheet (pack of 25)



• Downloadable

Reusable Crown Forms

Item #	Description	
21487	Straight-sided, 1 pair	10"-28"
21489		20"-56"
21491		40"-92"
21488	Slanted, 1 pair	10"-28"
21490		20"-56"

The slanted crown form (pictured), angled at 8°, is 5½" deep and will create crowns from 10"×10" up to 56"×56". The straight-sided forms (not pictured) are 5" deep. With them you can create crowns from 10"×10" clear up to 92"×92". These forms allow for a minimum 1½" overhang or drip edge.



To make a complete set, you need to order two pair of forms. Each pair contains two form sides.

Overview



Lyemance Energy Saving Damper

Silicone Rubber Gasket

Damper seals with a rubber gasket, not metal to metal.

Benefits include:

- tight seals
- no heat or air conditioning getting lost up your chimney
- downdraft elimination
- rain leak elimination
- pest entry prevention

Mounts On Top of Chimneys

This is the perfect location to create an airtight seal.

A cable drops down the flue and attaches to a handle. The handle is mounted in the firebox to be easily reached for convenient opening and closing.

Superior Construction

High quality materials that are:

- made of cast-aluminum and stainless steel
- precision fitted with our special silicone rubber gasket
- Lifetime Warranty

- **Superior Construction**
- **Energy Efficient**
- **Pest Exclusion**
- **Lifetime Warranty**

9 Reasons to have a

Lyemance Damper installed

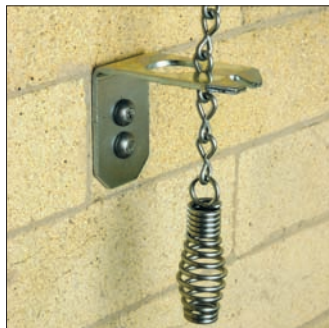
1. Replaces leaky throat dampers
2. Seals out moisture to extend chimney life
3. Energy efficient – seals in warmth and energy
4. Keeps animals out of chimneys
5. Made of cast-aluminum and stainless steel
6. Operates easily from inside the firebox
7. Stops downdrafts
8. Helps prevent odors
9. Lifetime Warranty

Lyemance™ Energy Saving Damper

- Silicone rubber seals tight
- Cast-aluminum construction, 32' cable and hardware included
- Easy opening with "power lever" assistance
- Lifetime warranty

Lyemance Dampers mount easily atop a flue tile with silicone sealant. A 32' stainless cable drops down the flue and mounts in the firebox.

Longer cables and a 4' cable shield may be ordered separately. Damper comes with instructions, hardware, and silicone sealant.



Control Handle, Mounted in Firebox

Note: Don't use Lyemance dampers with gas logs - failure to open could cause carbon monoxide to back up into the house. In case of a gas leak, gas could be trapped in the flue, resulting in an explosion.



Damper

Item #	Size	Fits Inside Flue Sizes	Height of Open Lid	Cross-Sectional Area (sq. in.)
12108	8"X8"	6½"X6½" to 8½"X8½"	3¼"	30
12110	8"X17"	5¾"X14¼" to 8¼"X16½"	5"	62
12109	9"X13"	6¼"X11" to 8⅞"X12⅞"	4¼"	49
12116	12"X16"	9¼"X12¾" to 12"X15"	5 ¼"	90
12113	13"X13"	10"X10" to 12½"X12½"	5"	66
12118	13"X18"	10"X15½" to 12½"X17½"	5"	106
12117	17"X17"	15"X15" to 17½"X17½"	6½"	172
12130	12" Round	10⅝" to 11⅜"	4¾"	75



Get Plans to Build a Damper Display
• Downloadable

Damper Cap

Item #	Size
12408	9"X13"
12411	13"X13"
12412	13"X18"

- Designed to fit over the Lyemance damper
- 304 stainless steel



Accessories

EZ Open Damper Handle

Item #	Now your customers can open Lyemance or Lock-Top dampers with even more ease. This handle mounts to the wall of the firebox (mounting hardware included). A lightweight extension slips over the handle and the damper opens with minimal effort.
09350	



Cables & Hardware

Item #	Description
12132	40' Cable (fits all Lyemance Dampers)
12150	50' Cable (fits all Lyemance Dampers)
09300	4' Stainless Cable Shield (fits all Lyemance Dampers)
12175	Extra Hardware Pack
12194	Installation Cable Pack

When the standard 32' cable isn't long enough, get a 40' cable or a 50' cable.

If the installed damper cable has to make a bend around a corner — a lintel or a smoke shelf, for instance — then that cable needs the 4' cable shield to protect it from friction fraying.

The Extra Hardware Pack includes: handle assembly (spring handle, jack chain, brass lug, triangle), keyhole bracket, two nail anchors, and allen wrench.

The Installation Cable Pack includes the same, plus a 32' cable and 3 oz. adhesive.

Cast-Aluminum Clean-Out Doors

Not recommended for smoke chambers.

Item #	Description
09700	8"×8": masonry opening required 8 ¹ / ₈ "×8 ¹ / ₈ "; access opening 7 ⁵ / ₈ "×7 ⁵ / ₈ "; outside dimensions 10 ¹ / ₂ "w×10 ¹ / ₂ "h×2"d
09702	8"×12": masonry opening required 7 ⁷ / ₈ "×12 ³ / ₈ "; access opening 7 ¹ / ₂ "×12"; outside dimensions 10 ⁷ / ₈ "w×15 ⁵ / ₁₆ "h×2"d
09704	12"×12": masonry opening required 12 ³ / ₈ "×12 ³ / ₈ "; access opening 12"×12"; outside dimensions 15 ⁵ / ₁₆ "w×15 ⁵ / ₁₆ "h×2"d



Sales Aids

Item #	Description
12199	Damper Flyers (pack of 100)
99120	Lyemance Damper Video/DVD



Overview



Lock-Top Energy Saving Damper

Silicone Rubber Gasket

Damper seals with a rubber gasket, not metal to metal.

Benefits include:

- tight seals
- no heat or air conditioning getting lost up your chimney
- downdraft elimination
- rain leak elimination
- pest entry prevention

Mounts On Top of Chimneys

This is the perfect location to create an airtight seal.

A cable drops down the flue and attaches to a handle. The handle is mounted in the firebox to be easily reached for convenient opening and closing.

Superior Construction

High quality materials that are:

- made of cast-aluminum and stainless steel
- precision fitted with our special silicone rubber gasket
- Lifetime Warranty

- Superior Construction
- Energy Efficient
- Pest Exclusion
- Lifetime Warranty

9 Reasons to have a

Lock-Top Damper installed

1. Replaces leaky throat dampers
2. Seals out moisture to extend chimney life
3. Energy efficient – seals in warmth and energy
4. Keeps animals out of chimneys
5. Made of cast-aluminum and stainless steel
6. Operates easily from inside the firebox
7. Stops downdrafts
8. Helps prevent odors
9. Lifetime Warranty

Lock-Top® Energy Saving Damper

- Silicone rubber seals tight
- Stainless steel & cast-aluminum construction, 30' cable and hardware included
- Lifetime warranty

Note: Don't use Lock-Top dampers with gas logs - failure to open could cause carbon monoxide to back up into the house. In case of a gas leak, gas could be trapped in the flue, resulting in an explosion.



Control Handle, Mounted in Firebox

Damper

Item #	Size	Fits Inside Flue Sizes			Height of Open Lid	Cross-Sectional Area (sq. in.)
09100	8"X8"	6"X6" to 9"X9"	7"X7"	10"X10"	8"	49
09110	8"X13"	6"X9" to 9½"X12½"	7"X10"	10"X13"	8½"	70
09115	8"X17"	6"X14" to 9"X17½"	7"X15"	10"X18"	7½"	105
09120	13"X13"	9"X9" to 12½"X12½"	10"X10"	13"X13"	9"	100
09125	13"X17"	9"X14" to 12½"X17½"	10"X15"	13"X18"	7¾"	150
09130	17"X17"	14"X14" to 17½"X17½"	15¼"X15¼"	18¼"X18¼"	7¼"	232

Sweep's Ring - (Lock-Top Damper Required)

Item #	Size
12108	8"X8"
12110	8"X17"
12109	9"X13"
12116	12"X16"
12113	13"X13"

- Allows easy removal of damper for cleaning
- Just seal to the flue, then screw the Lock-Top base to the Sweep's Ring



RS Adaptors - (Lock-Top Damper Required)

Item #	Size
12108	8"X8"
12110	8"X17"
12109	9"X13"
12116	12"X16"
12113	13"X13"

- Provides mounting to round flue sizes
- Not for use with air-insulated factory-built chimneys



Lock-Top II Chimney Cap/Damper



- Silicone rubber seals tight
- Stainless steel & cast-aluminum construction, 30' cable and hardware included
- Lifetime warranty
- Added protection of a 3/4" chimney cap

Note: Don't use Lock-Top dampers with gas logs - failure to open could cause carbon monoxide to back up into the house. In case of a gas leak, gas could be trapped in the flue, resulting in an explosion.

3/4" Mesh

Item #	Size	Fits Inside Flue Sizes	Cross-Sectional Area (sq. in.)
09501	8"X8"	6"X6" to 9"X9"	49
09503	8"X13"	6"X9" to 9 1/2"X12 1/2"	70
09505	9"X17"	6"X14" to 9 1/2"X17 1/2"	105
09507	13"X13"	9"X9" to 12 1/2"X12 1/2"	100
09509	13"X17"	9"X14" to 12 1/2"X17 1/2"	150
09510	17"X17"	14"X14" to 17 1/2"X17 1/2"	232

5/8" Mesh

Item #	Size	Fits Inside Flue Sizes	Cross-Sectional Area (sq. in.)
09512	8"X8"	6"X6" to 9"X9"	49
09515	8"X13"	6"X9" to 9 1/2"X12 1/2"	70
09518	9"X17"	6"X14" to 9 1/2"X17 1/2"	105
09520	13"X13"	9"X9" to 12 1/2"X12 1/2"	100
09522	13"X17"	9"X14" to 12 1/2"X17 1/2"	150



EZ Open Damper Handle

Item #
09350

Cables & Hardware

Item #	Description
09150	50' Cable
09300	4' Stainless Cable Shield
12174	Extra Hardware Pack
12178	Installation Cable Pack

The Extra Hardware Pack includes: handle assembly (spring handle, jack chain, brass lug, triangle), keyhole bracket, two nail anchors, allen wrench.

The Installation Cable Pack includes the same, plus a 32' cable and 3 oz. adhesive.

Sales Aids

Item #	Description
99309	Damper Flyers (pack of 100)
99122	Damper Video/DVD

